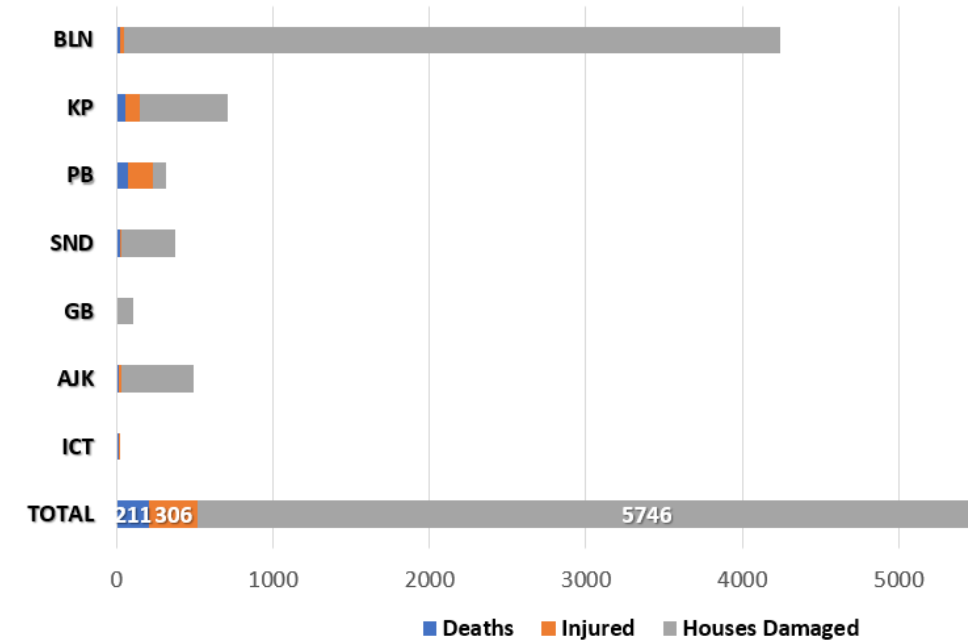


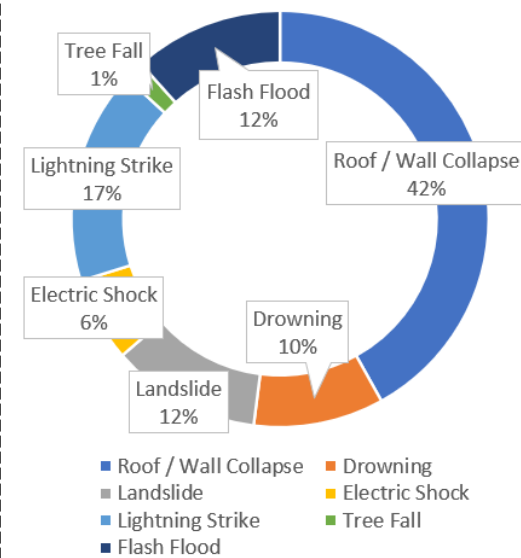
- TOP RAINFALL RECORDED LAST 24 HOURS (MM)**
- **Balochistan.** Nil
 - **Khyber Pakhtunkhwa.** Cherat 12
 - **Punjab.** Narowal 4, Sialkot 4, Lahore 1
 - **Sindh.** Nil
 - **Gilgit-Baltistan.** Gilgit - Trace
 - **State of AJ&K.** Muzaffarabad 22, Bandi Abbaspur 11, Garhi Dupatta 4
 - **ICT.** Nil

Cumulative Losses & Damages (25 June to Date)

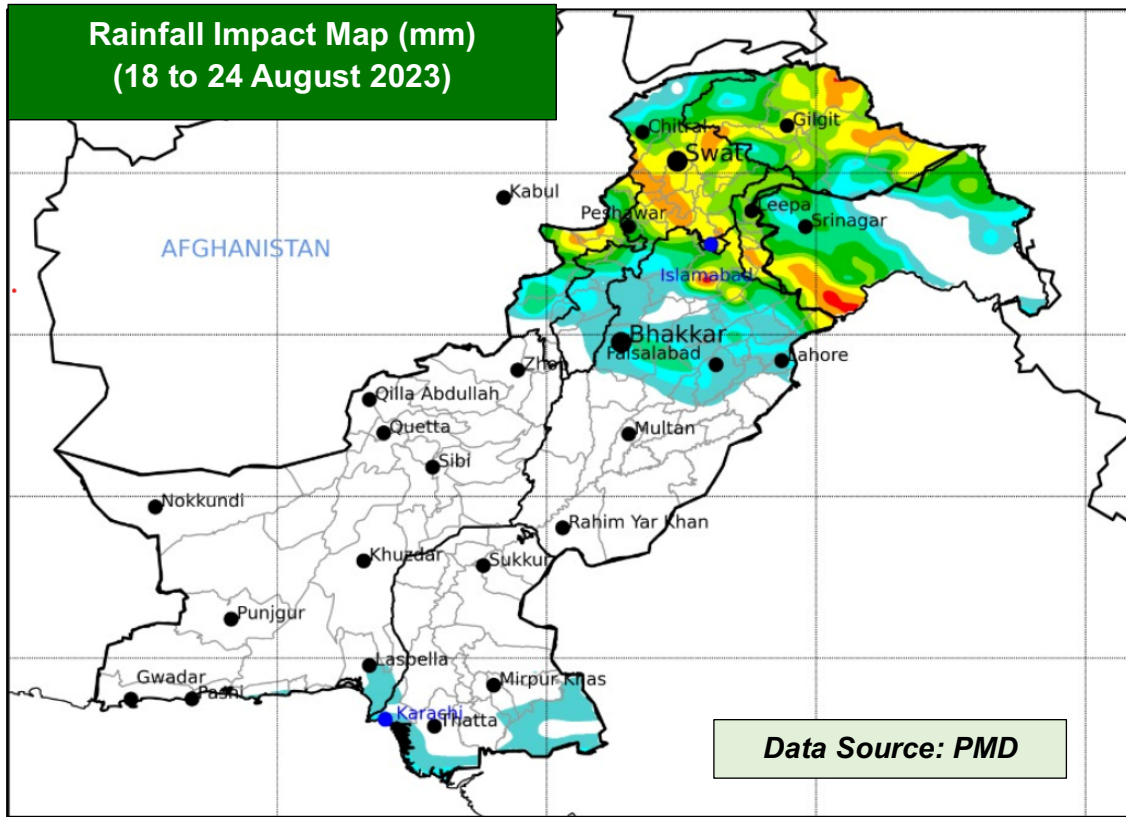


- Flood River Sutlej – Evacuation Efforts**
- With **issuance of timely early warning / advisory** and pro-active engagement of all stakeholders by NDMA, **coordinated evacuation of vulnerable / at-risk population from low-lying areas adjacent River Sutlej has been ensured in Districts Kasur, Okara, Bahawalnagar, Pakpattan, Vehari, Bahawalpur and Lodhran via Rescue 1122**
 - **Persons Evacuated / Transported: 162,247**
 - **Livestock Evacuated: 5,803**
 - **Resources Deployed**
 - **Boats: 203**
 - **Rescue Personnel: 795**

Cumulative Deaths Categorization



Note: Losses / Damages data is provided by PDMA/ GBDMA/ SDMA/ Govt Depts and are preliminary.



RESERVOIR LEVELS (0600 hrs)		
Details	Tarbela	Mangla
MCL (Feet)	1,550.0	1,242.0
Dead Level (Feet)	1,402.0	1,050.0
Water Level (Feet)	1549.59	1242.00
Change Last 24hrs	+0.17	0.00
Live Storage (MAF)	Max	5.809
	Present	5.786
Change Last 24hrs	+0.010	0.000
% Dam Filled	99.60	100
Change Last 24hrs	+0.17	0.00

RIVERS	Stations	Design Capacity	Actual Observations at 0600 PST		Quantitative Forecast for Next 24-hrs (Inflow)	Qualitative Forecasted Flood Level (Inflow)
			Inflow	Outflow		
INDUS	Tarbela	1500	201.0	155.3	180-200	Below Low
	Kalabagh	950	205.0	197.0	200-230	-do-
	Chashma	950	265.8	244.6	230-265	Low
	Taunsa	1100	227.7	208.7	200-230	Below Low
	Guddu	1200	257.0	224.4	250-260	Low
	Sukkur	1500	216.1	161.1	210-220	-do-
	Kotri	875	162.1	121.8	No Sig.change	Below Low
KABUL	Nowshera	-	32.9	32.9	-do-	-do-
JHELUM	Mangla	1060	24.0	22.3	20-25	-do-
	Rasul	850	15.0	11.9	No Sig.change	-do-
CHENAB	Marala	1100	64.9	38.2	55-65	-do-
	Khanki	1100	48.7	40.4	No Sig.change	-do-
	Qadirabad	807	39.9	29.9	-do-	-do-
	Trimmu	645	69.6	56.0	-do-	-do-
	Punjnad	700	70.5	54.7	-do-	-do-
RAVI	Jassar	275	20.2	20.2	-do-	-do-
	Shahdara	250	30.0	30.0	-do-	-do-
	Balloki	225	38.0	30.2	-do-	-do-
	Sidhnai	150	38.1	20.2	35-40	Low
	SUTLEJ	G.S. Wala	--	253.1	253.1	253 F 200
Sulemanki		325	113.4	113.4	130 R 220	High to V. High
Islam		300	32.1	30.1	35-50	Low

FORECASTED IMPACT NEXT 24 HOURS

- River Sutlej at GS Wala **has reached EXTREMELY HIGH FLOOD and is in FALLING TREND**
- River Sutlej at Sulemanki is now at **High Flood in a RISING TREND** and is likely to attain **Very High Flood Level by this evening**
- River Sutlej at Islam is likely to attain **High Flood Level on 22 Aug from 0600 onwards**
- **At-risk Districts include Kasur, Okara, Bahawalnagar, Pakpattan, Vehari, Bahawalpur, & Lodhran**
- Hot and Humid Weather with Isolated Rain-Wind / Thundershowers expected
 - Khyber Pakhtunkhwa (Dir, Swat, Abbottabad, Malakand and Galiyat)
 - Punjab (Lahore, Sialkot, Narowal, Rawalpindi, Murree)
- Hot and Humid Weather with Isolated Rain expected in Islamabad Capital Territory
- Hot and Humid Weather expected in Balochistan and Sindh
- Dry Weather expected in Gilgit Baltistan
- Dry Weather with Isolated Rain expected in State of AJ&K

GUIDANCE ISSUED

- PDMA to ensure **early warning & prompt response** in vulnerable areas in light of wind-thundershowers (in areas indicated above).
- PDMA to undertake **regular public awareness on all media channels / social media** to maximise general public's knowledge on risks associated with monsoon season; heavy rains, urban flooding, flash flooding, landslides, etc.
- City / District Administrations are to **ensure contingency traffic plans** for areas vulnerable to flooding in urban centres, (as indicated above) catering for **prompt de-watering operations in flooded areas.**
- PDMA Punjab to **ensure timely early warning and evacuation of all at-risk populace living downstream of GS Wala, Sulemanki and Islam on River Sutlej.**
- PDMA Punjab to **ensure provision of medical care and relief items to displaced populace in camps**
- PDMA Khyber Pakhtunkhwa, PDMA Punjab & SDMA to ensure **early warning, prompt evacuation and response** in vulnerable low-lying areas downstream Tarbela & Mangla Dams in-case of any emergent water discharges or flooding situation in light of present reservoir levels.
- GBDMA to ensure all necessary measures are undertaken to mitigate / prepare against GLOF incidents.
- NHA / FWO / Local C&W Depts to **ensure pre-placement of machinery and timely restoration of damaged road linkages.**
- Rescue Services, Armed Forces and leading NGOs / CSOs to **ensure availability of personnel / equipment** in the indicated areas & **be on stand-by for rapid response.**